

1

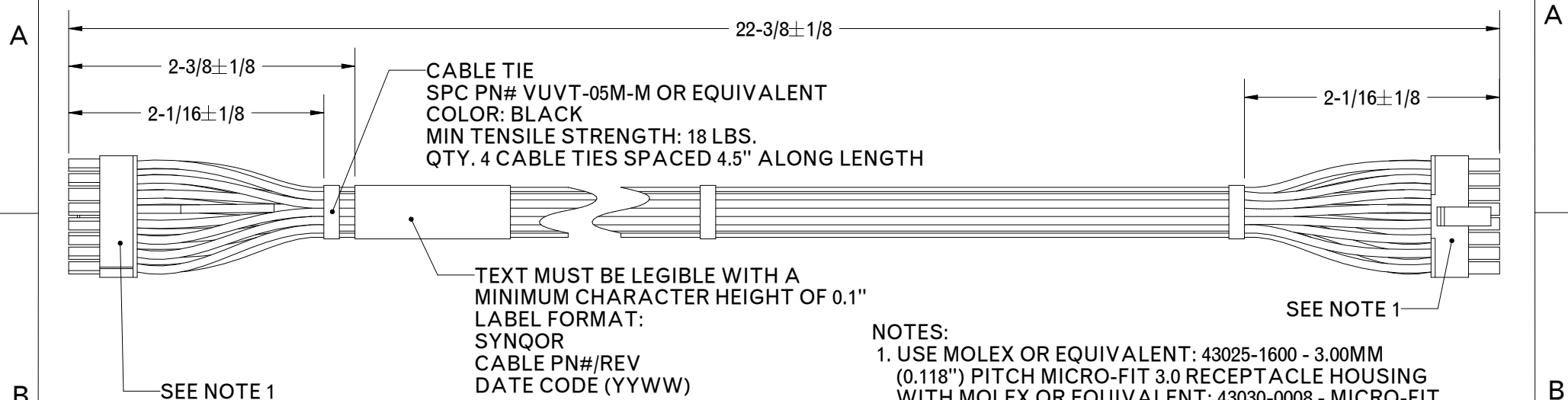
2

3

4

## REVISIONS

| REV | DESCRIPTION                          | DATE     | APPROVED  |
|-----|--------------------------------------|----------|-----------|
| C   | ADDED WEIGHT NOTE PER ECO 13-17172   | 9/26/13  | JAK       |
| D   | OVERALL LENGTH SPEC PER ECO 20-27120 | 11/20/20 | K.DUBROWN |



## NOTES:

- USE MOLEX OR EQUIVALENT: 43025-1600 - 3.00MM (0.118") PITCH MICRO-FIT 3.0 RECEPTACLE HOUSING WITH MOLEX OR EQUIVALENT: 43030-0008 - MICRO-FIT 3.0 CRIMP TERMINAL, (QTY: 32)
- USE 20AWG WIRES (10X30 STRANDING) 18" LONG WIRE INSULATION: UL AWM Style 1569 - 300V, 105° C / CSA TYPE TRSR-64, 105° C
- OVERALL NOMINAL WIRE DIAMETER: .067
- ALL PARTS MUST BE UL RECOGNIZED AND CSA APPROVED
- CABLE MANUFACTURER MUST FOLLOW CONNECTOR MANUFACTURER'S CRIMP GUIDELINES.
- ALL PARTS/COMPONENTS MUST BE FREE OF DAMAGES, CUTS.
- WEIGHT: 0.15 LBS (68.04g)
- AN ELECTRICAL CONTINUITY TEST MUST BE PERFORMED TO CHECK FOR OPEN CIRCUIT BETWEEN CONNECTOR PINS

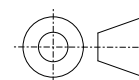
| PIN# | WIRE COLOR            | DESCRIPTION                                  |
|------|-----------------------|--|
| 1    | VIOLET                | FAN_GOOD                                     |
| 2    | YELLOW                | AC_POWER_GOOD                                |
| 3    | LIGHT BLUE            | DC_POWER_GOOD                                |
| 4    | ORANGE                | 5V_STANDBY                                   |
| 5    | RED                   | V <sub>OUT</sub> <sup>+</sup>                |
| 6    | RED                   | V <sub>OUT</sub> <sup>+</sup>                |
| 7    | RED                   | V <sub>OUT</sub> <sup>+</sup>                |
| 8    | RED                   | V <sub>OUT</sub> <sup>+</sup>                |
| 9    | BROWN                 | RS485_A                                      |
| 10   | GREEN                 | RS485_B                                      |
| 11   | WHITE                 | REMOTE_ENABLE                                |
| 12   | BLACK W/ WHITE STRIPE | V <sub>OUT</sub> <sup>-</sup> OR 12V STANDBY |
| 13   | BLACK                 | V <sub>OUT</sub> <sup>-</sup>                |
| 14   | BLACK                 | V <sub>OUT</sub> <sup>-</sup>                |
| 15   | BLACK                 | V <sub>OUT</sub> <sup>-</sup>                |
| 16   | BLACK                 | V <sub>OUT</sub> <sup>-</sup>                |

## TOLERANCES:

Unless otherwise specified:  
All dimensions in inches

.X +/- .025  
.XX +/- .010  
.XXX +/- .005  
Angles +/- 1°

THIRD ANGLE PROJECTION



THIS DRAWING IS THE PROPERTY OF SYNQOR INC.  
It is not to be reproduced or copied, in whole or in part, or used for furnishing information to others, or for any purpose detrimental to the interests of SynQor. The information shown herein may be protected by patents owned or controlled by SynQor.

155 Swanson Road  
Boxborough, MA 01719

## ACUQOR EVAL CABLE

### PN AQ-CBL-OUT2C

SOURCE: PRO/E OUTPUTCABLE2

| SIZE | DATE      | DWG. NO.    | REV |
|------|-----------|-------------|-----|
| A    | NOV-20-20 | 705-1000005 | D   |

SCALE: 0.850

DRAWN: KJD

CHECK:

SHEET 1 of 1

1

2

3

4